

Supplementary Material

**Supplementary Table 1.
Poisson Model Selection**

		AIC
Unemployment rate*	Linear	1662.797
	natural spline 3 df	1664.603
CPI	Linear	3088.146
	natural spline 3 df	3088.274
Marriage rate	Linear	3089.504
	Natural spline 3 df	3090.054

AIC: Akaike Information Criterion, df: Degrees of freedom

*Monthly unemployment rate was only available from April of 1998

Supplementary Table 2.

Monthly means of suicides, consumer price index (CPI), marriages rates and unemployment rates.

Parameter/Month	1	2	3	4	5	6	7	8	9	10	11	12
Suicides	29.69	26.79	35.10	36.82	41.61	41.05	39.43	36.07	31.84	29.38	28	26.53
CPI	63.48	63.09	64.60	65.16	65.27	65.48	64.58	64.31	65.75	66.15	66.12	66.50
Marriage rates	30.42	32.09	19.95	35.88	50.78	56.27	65.47	49.80	70.62	52.91	39.61	42.69
Unemployment rates	15.19	15.26	19.95	15.1	15.2	15.17	15.15	15.2	15.18	15.29	15.35	15.38

CPI: Consumer Price Index

Unemployment rates were available from April 1998. CPI and marriage rates from January 1980.

Supplementary Table 3.

Annual means of suicide, consumer price index (CPI), marriages rates & unemployment rates.

Year	Suicide	CPI	Marriage rates	Unemployment rates
1980	26.25	5.47	53.88	-
1981	26.83	6.81	61.05	-
1982	28.916	8.25	57.77	-
1983	30.66	9.92	60.27	-
1984	32.416	11.75	46.18	-
1985	33.83	14.02	53.47	-
1986	32.75	17.24	48.60	-
1987	34.16	20.07	55.16	-
1988	33.58	22.79	39.78	-
1989	31.91	25.91	51.18	-
1990	29.08	31.20	48.51	-
1991	31.75	37.28	53.04	-
1992	29.25	43.19	39.02	-
1993	34.33	49.42	49.60	-
1994	29.58	54.79	45.07	-
1995	30.83	59.69	50.53	-
1996	29.66	64.58	35.69	-
1997	31.16	68.16	47.37	-
1998	33.58	71.41	43.17	11.11
1999	31.75	73.29	47.38	11.95
2000	31.83	75.60	37.73	11.22
2001	27.83	78.15	44.91	10.67
2002	26.91	80.99	44.25	10.30
2003	31.25	83.85	46.59	9.75
2004	29.41	86.28	39.10	10.58
2005	33.33	89.34	46.32	10.00
2006	33.50	92.19	43.73	9.00
2007	27.33	94.86	46.31	8.39
2008	31.08	98.80	40.27	7.783
2009	32.58	100.00	44.44	9.63
2010	31.41	104.71	42.21	12.73
2011	39.75	108.19	41.32	17.88
2012	42.33	109.82	37.44	24.54
2013	44.41	108.81	38.89	27.50
2014	47.08	107.38	40.57	26.55
2015	44.08	105.52	41.27	24.97
2016	40.33	104.64	38.37	23.54
2017	43.58	105.82	38.83	21.50
2018	47.25	106.48	36.81	19.33
Total	33.52	65.047	45.54	15.24

CPI: Consumer Price Index

Unemployment rates were available from April 1998. CPI and marriage rates from January 1980.

Supplementary Table 4.

Subset variables selection in Poisson regression models for the period April 1998 – December 2018.

	AIC
Marriage rate	1660.474
Marriage rate + Unemployment rate	1659.753
Marriage rate + Unemployment rate + CPI	1660.417

AIC: Akaike Information Criterion. CPI: Consumer Price Index
 Monthly unemployment rate was available from April of 1998

Supplementary Table 5.

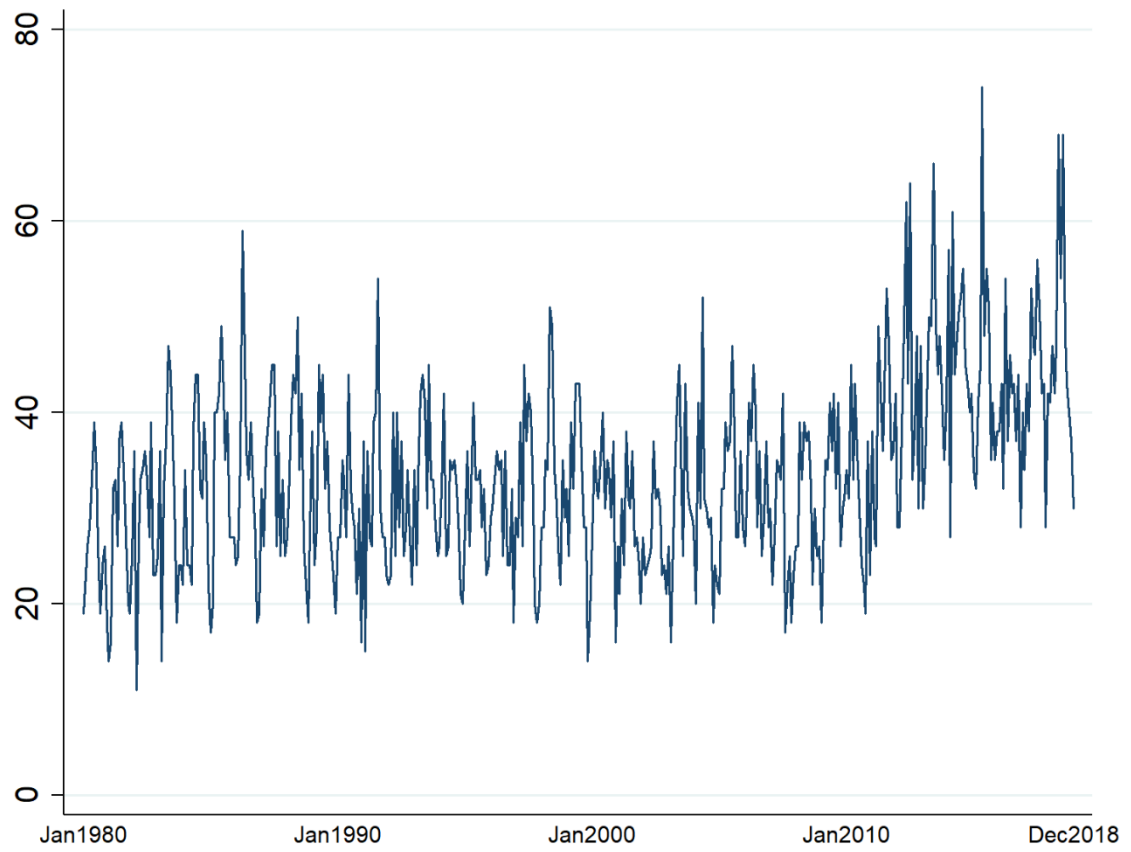
Incidence rate ratios (IRR) from Poisson univariate models adjusted for time trends and seasonality.

	Model 1			Model 2			Model 3		
	Total	Men	Female	Total	Men	Female	Total	Men	Female
CPI	0.971*	0.969*	0.980						
Marriage rate				0.998*	0.998	0.998			
Unemployment rate							1.025	1.017	1.042

CPI: Consumer Price Index

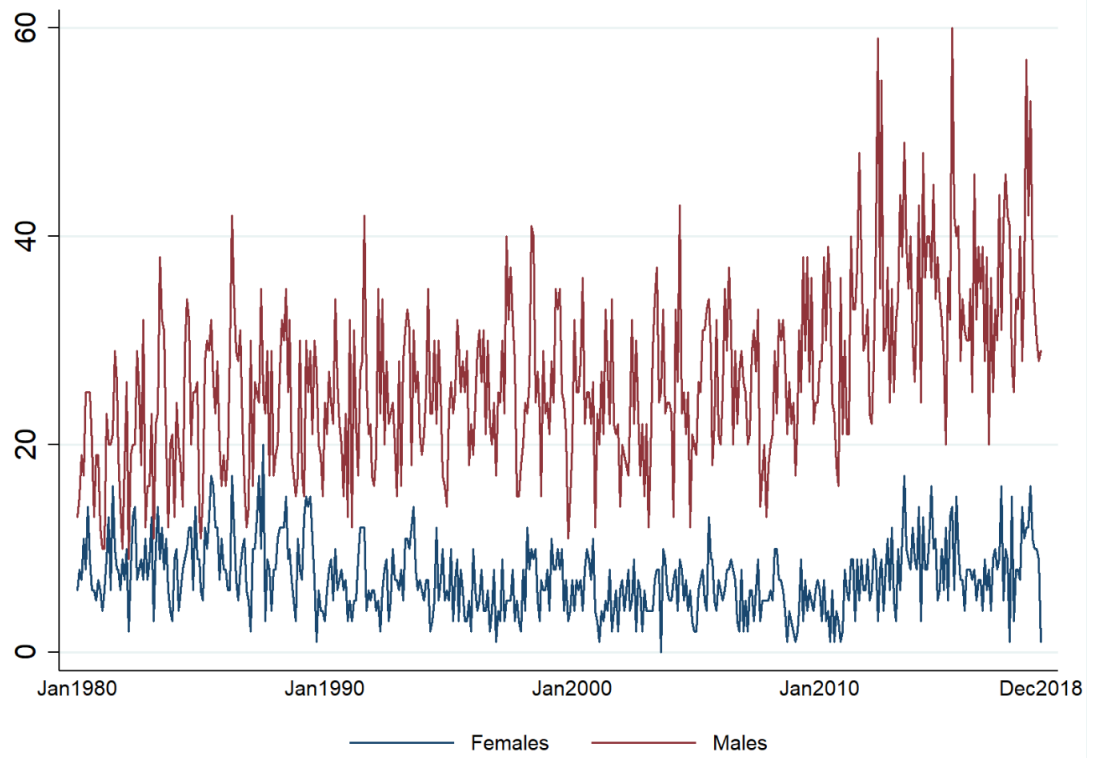
Unemployment rates were available from April 1998. CPI and marriage rates from January 1980.

*p value<0.05



Supplementary Figure 1.

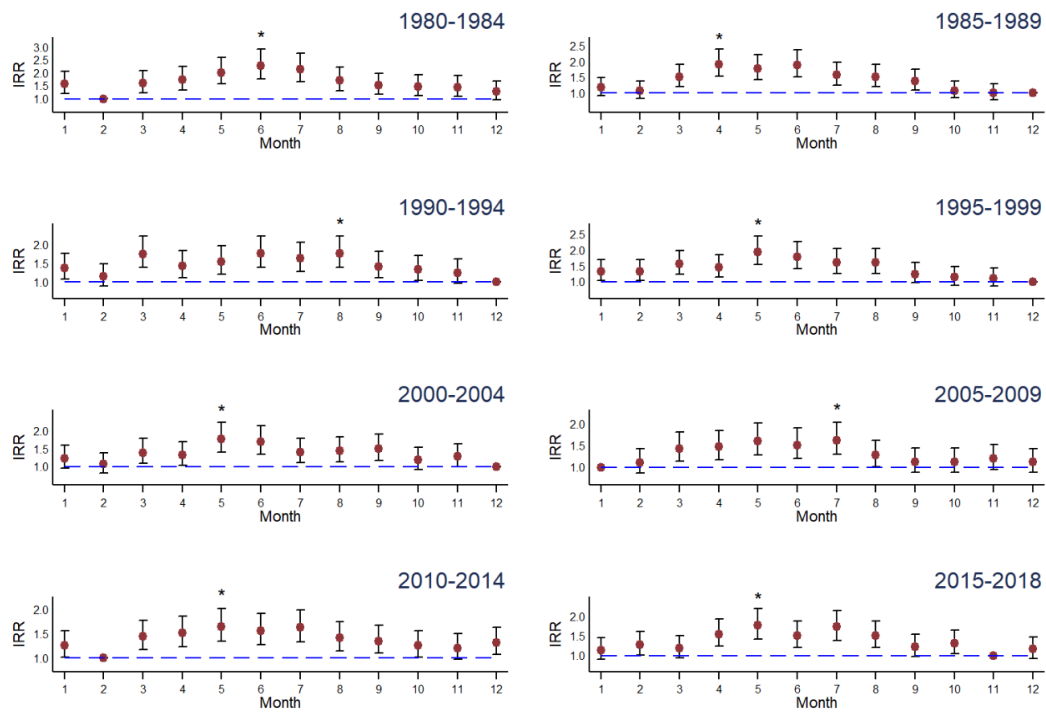
Monthly frequency of total suicides during the period under investigation (1980-2018) in Greece.



Supplementary Figure 2.

Sex stratified monthly frequency of suicides during the period under investigation (1980-2018) in Greece.

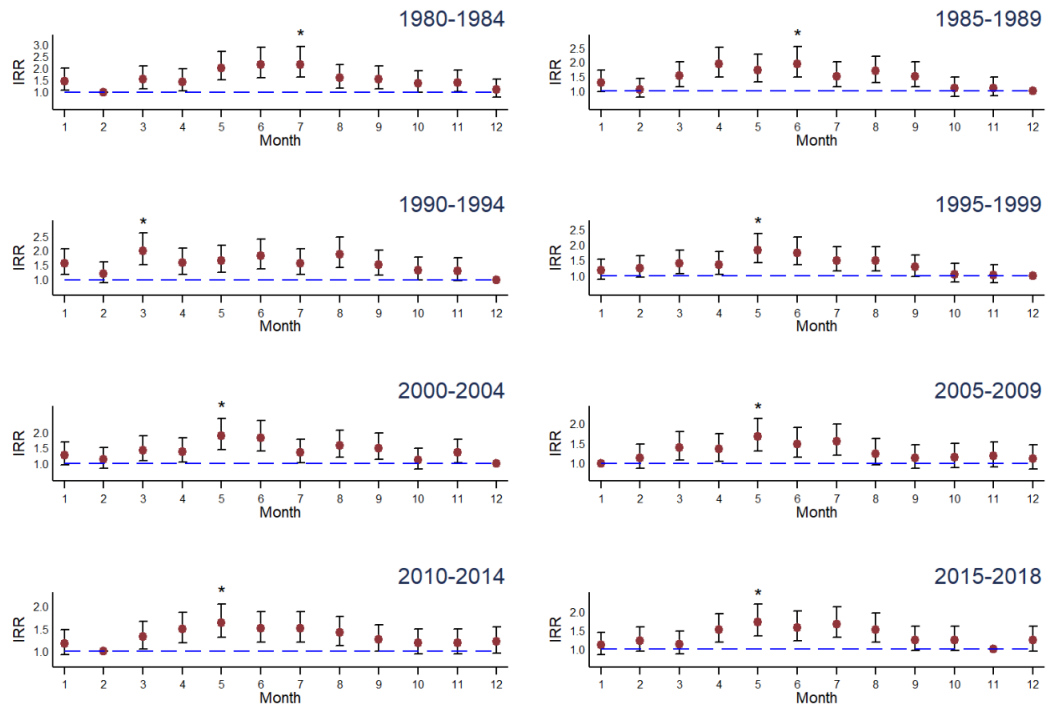
Suicides in Greece



Supplementary Figure 3.

Seasonal suicide patterns in Greece across 5-year intervals for the period 1980-2018. Peak months are denoted with an asterisk (*).

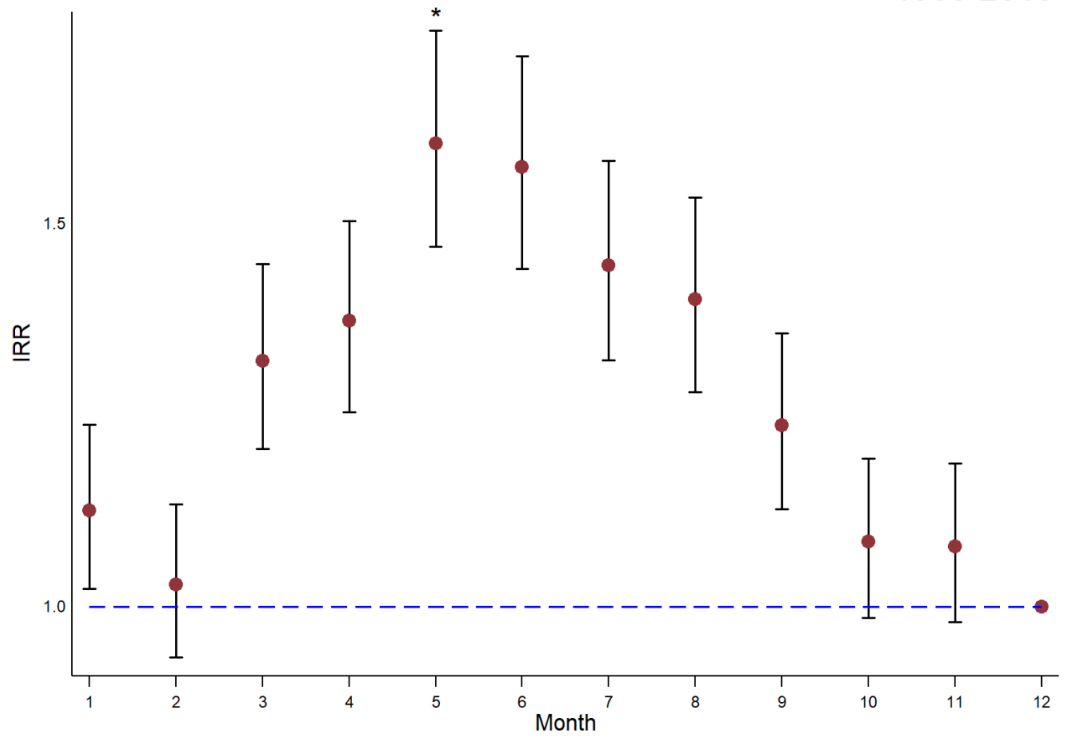
Male suicides



Supplementary Figure 4.

Male monthly incidence rate ratio (IRR) in 5-year intervals of male suicides in Greece. Peak months are denoted with an asterisk (*).

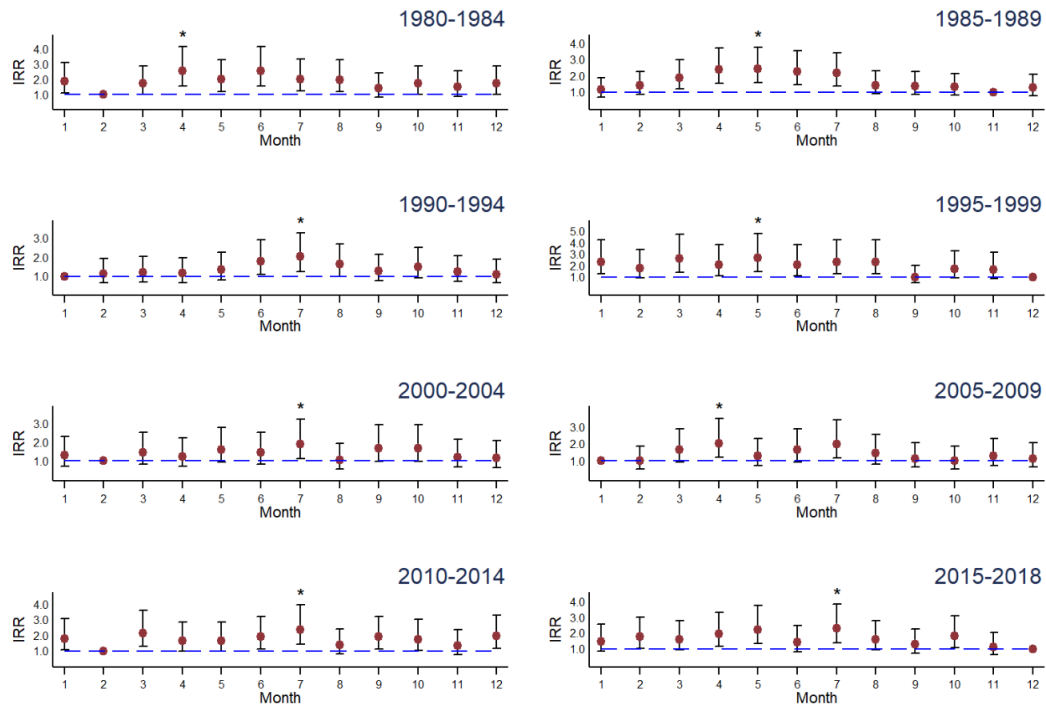
1980-2018



Supplementary Figure 5.

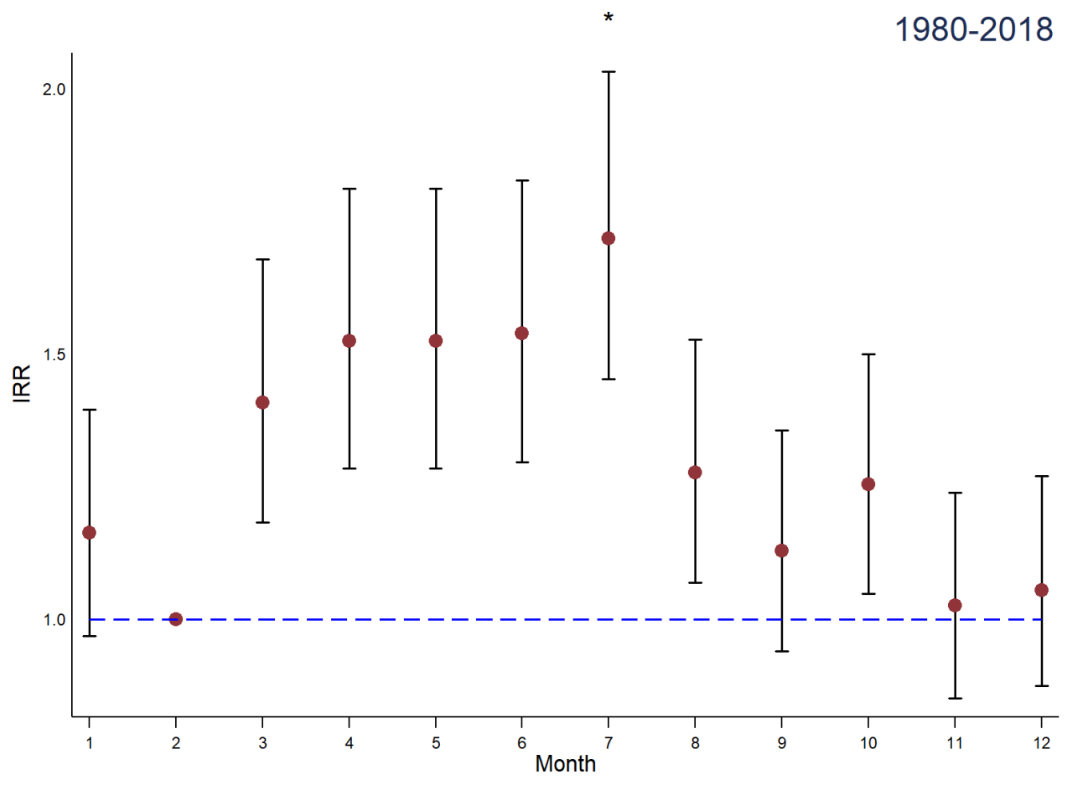
Monthly incidence rate ratio (IRR) of male suicides in Greece. Peak month is denoted with an asterisk (*).

Female suicides

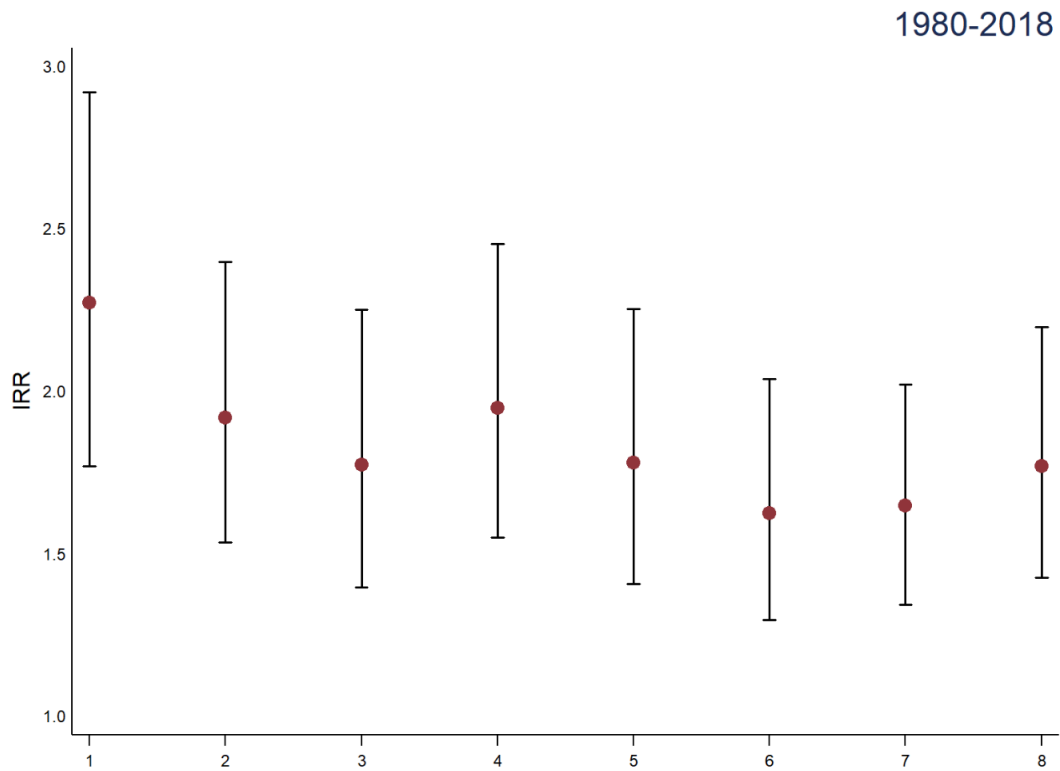


Supplementary Figure 6.

Monthly incidence rate ratio (IRR) of female suicides in 5-year intervals in Greece. Peak months are denoted with an asterisk (*).



Supplementary Figure 7. Monthly incidence rate ratio (IRR) of female suicides in Greece. Peak month is depicted with an asterisk (*).



Supplementary Figure 8.

Investigation of the seasonal trend of suicides in Greece.

Incidence rate ratio (IRR) of peak months across 5-year intervals for the whole study period (1980-2018).